



ANGANOM  
TEPO SI INA'

Bay sinulat he' si Omarjan Jahuran,  
si Nannura Ladjawan, si Mina Alawani,  
maka si Lolita Adjari.

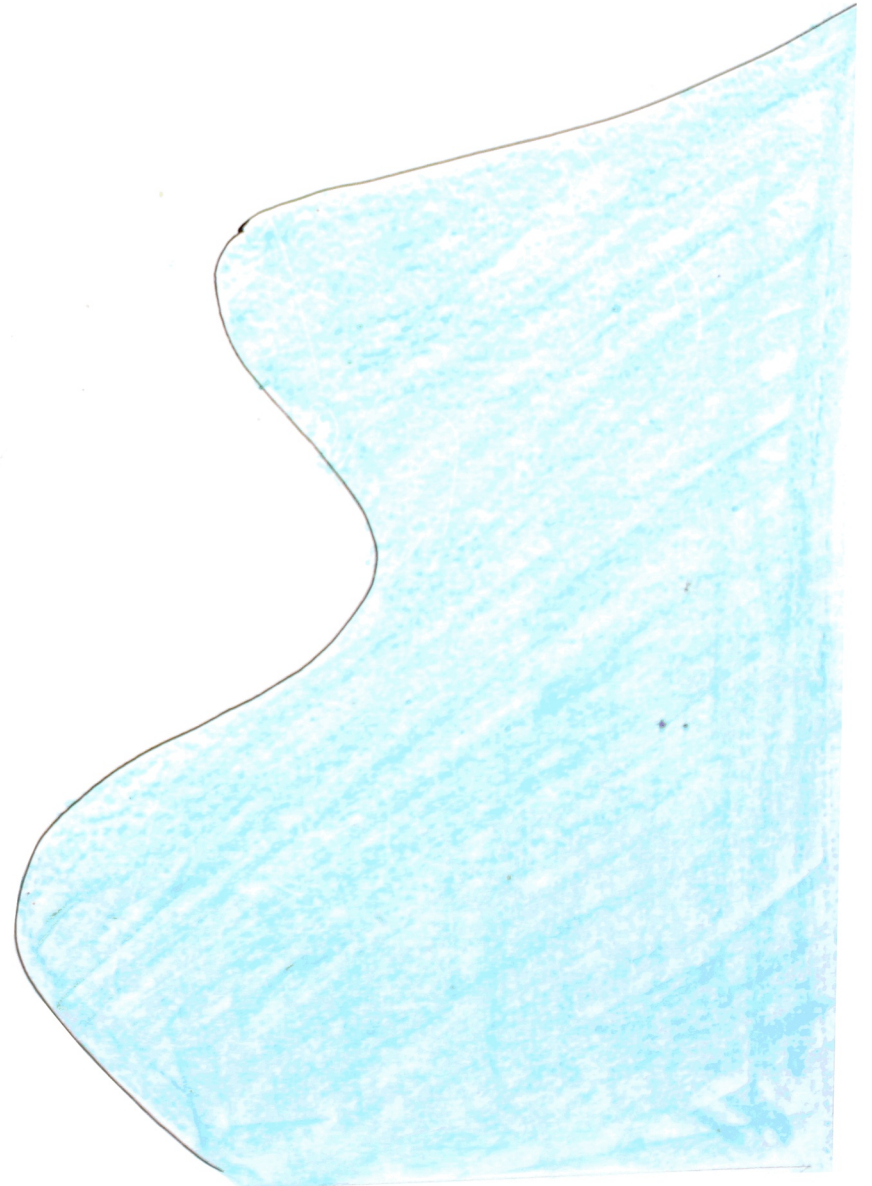
Bay ginudlis he' si Elmo S. Anggilan.







**Angā' pandan ina'ku  
ma dambila' sowang.**





Ni'isi' e'na  
kamemon pandan ni karut,  
ati niruwa' ni bangka'.





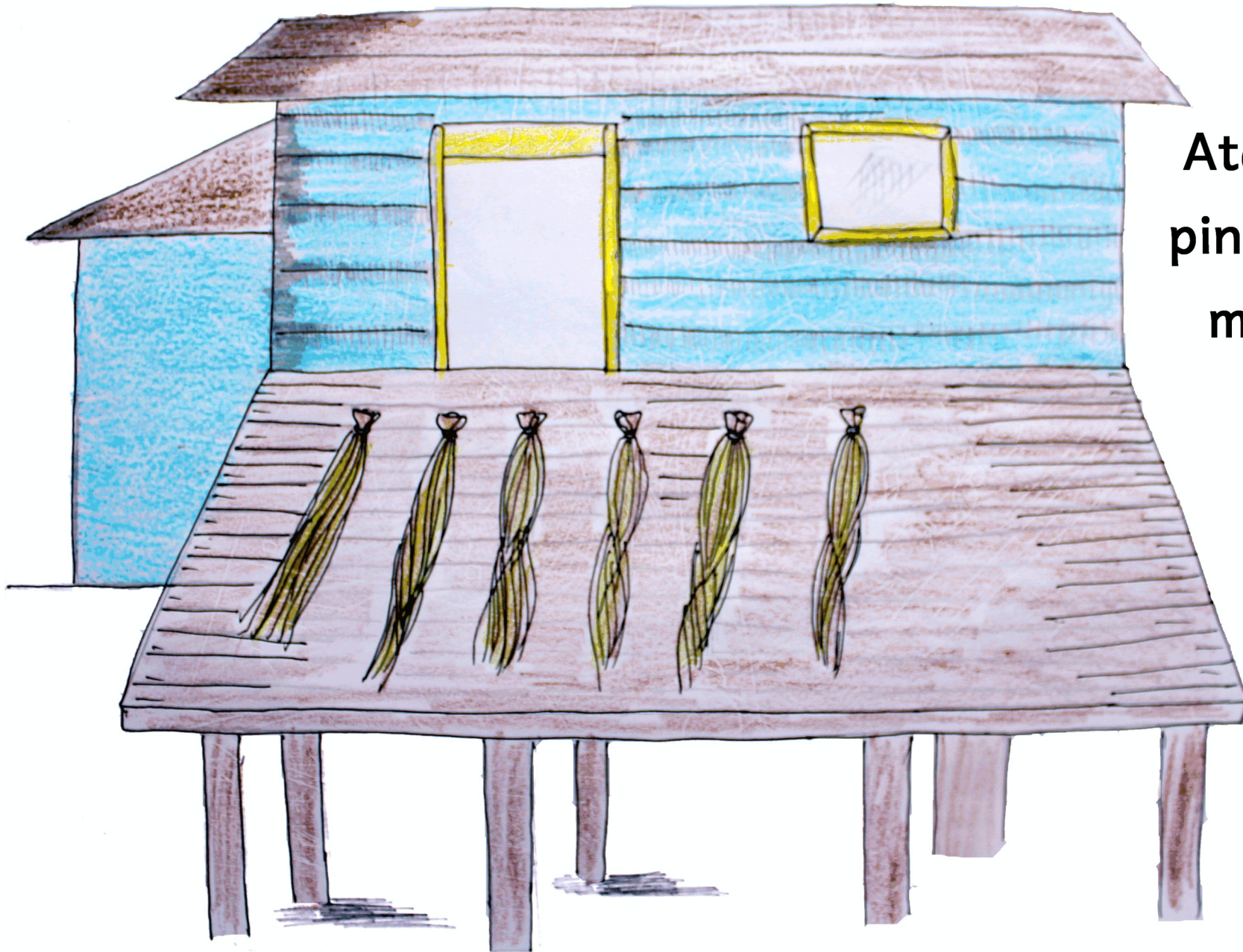


At'kka' pa'in ni luma',  
nila'anan e'na  
saga iting pandan.



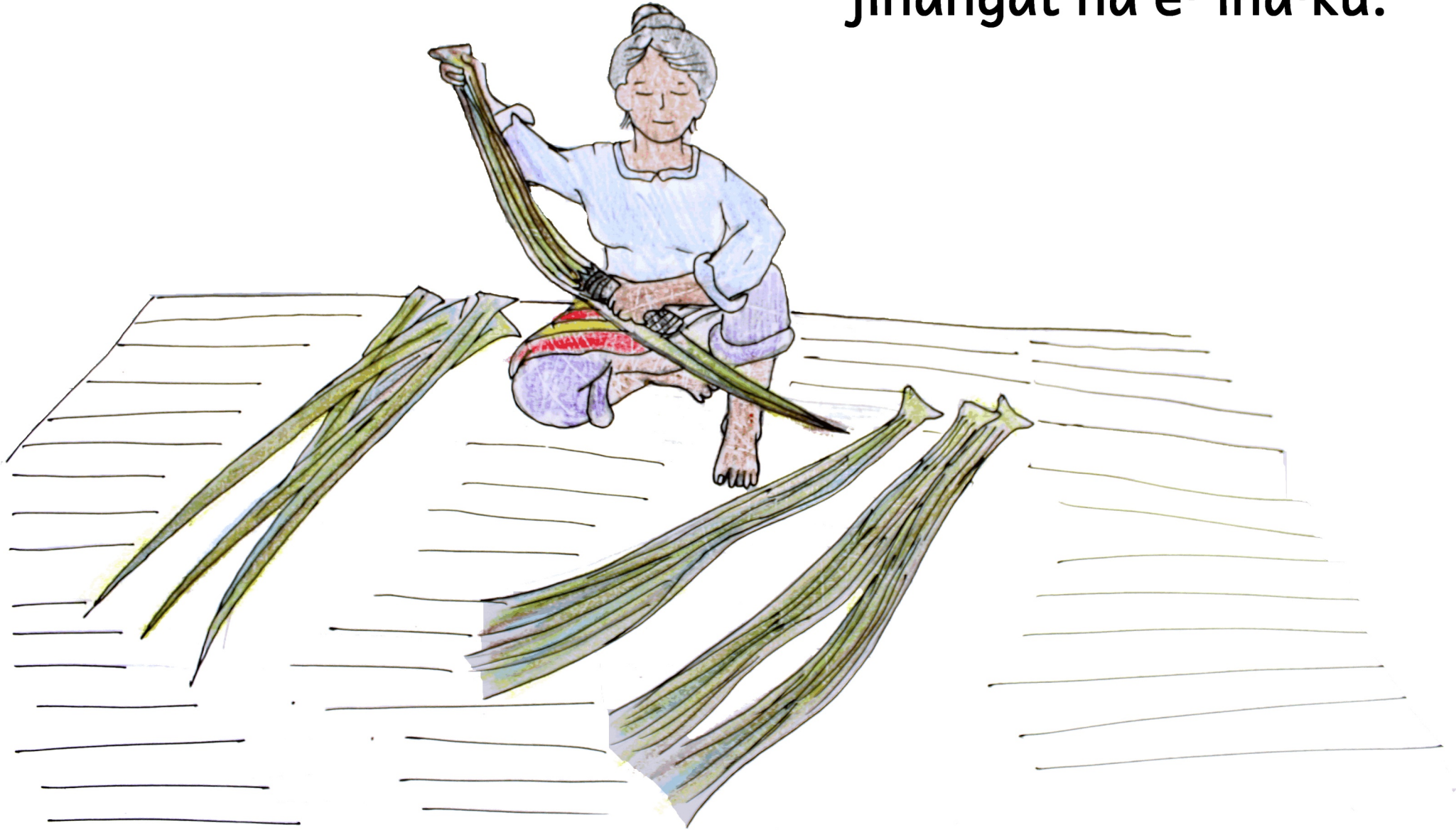
**Nilokot e'na  
kamemon pandan.  
Niengkotan.  
Pinatibulung.  
Puwas ni'isi ni kaldero  
bo' bin'lla.**





Atahak pa'in,  
pina'llawan na  
ma pantān.

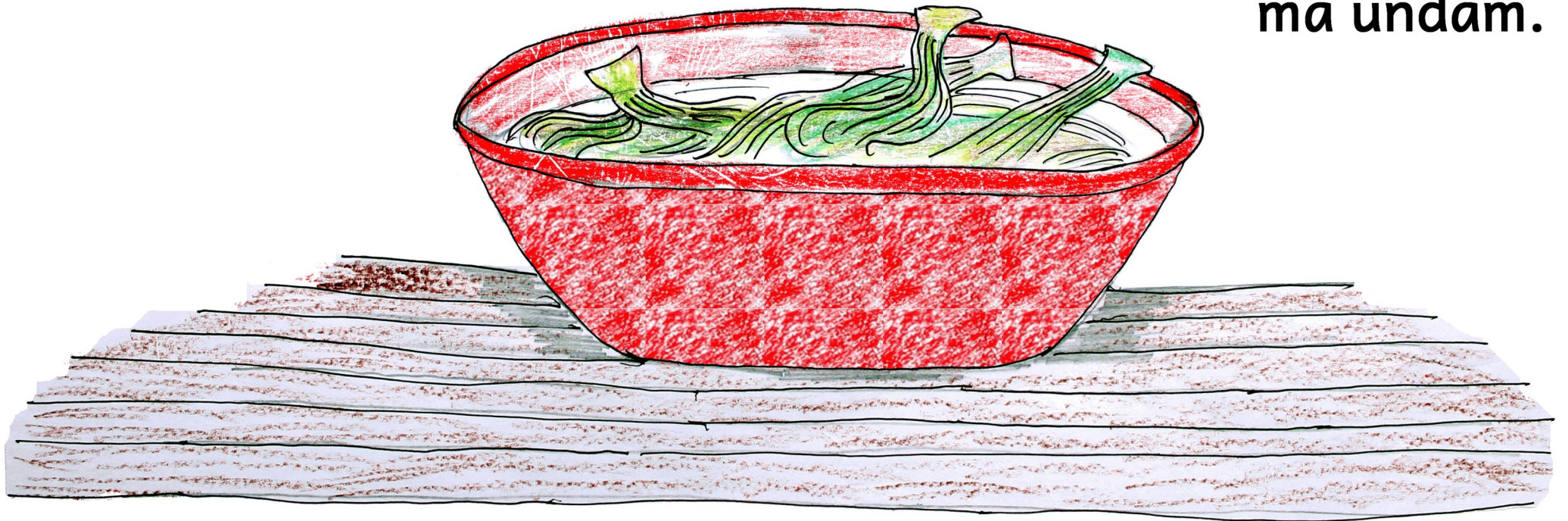
Atoho' pa'in pandan hē',  
jinangat na e' ina'ku.



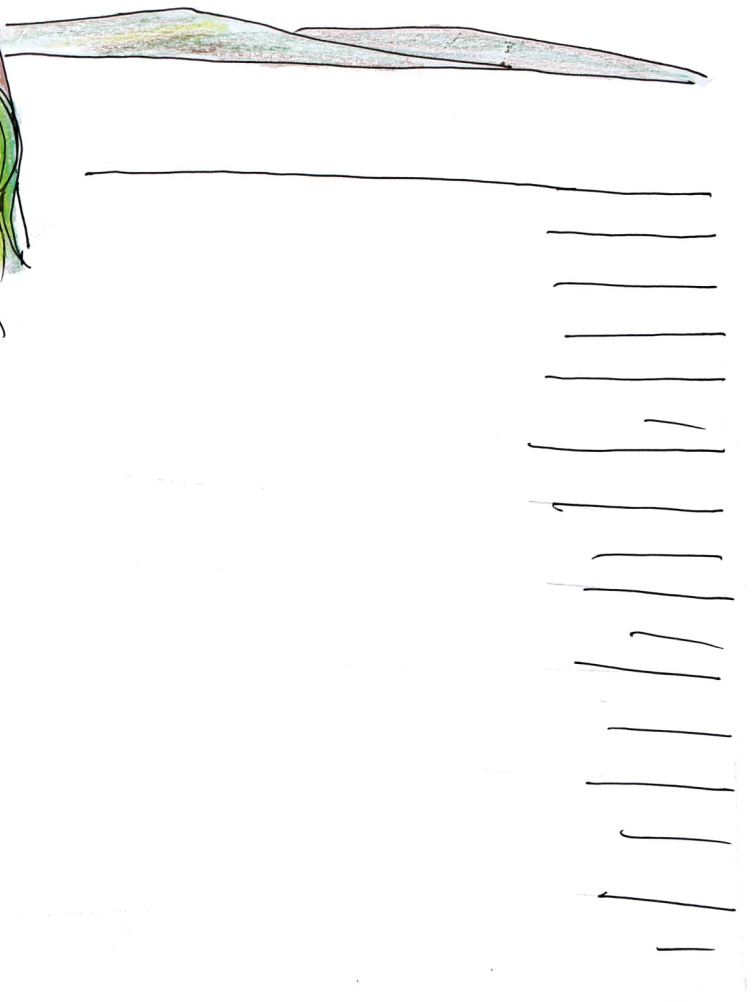
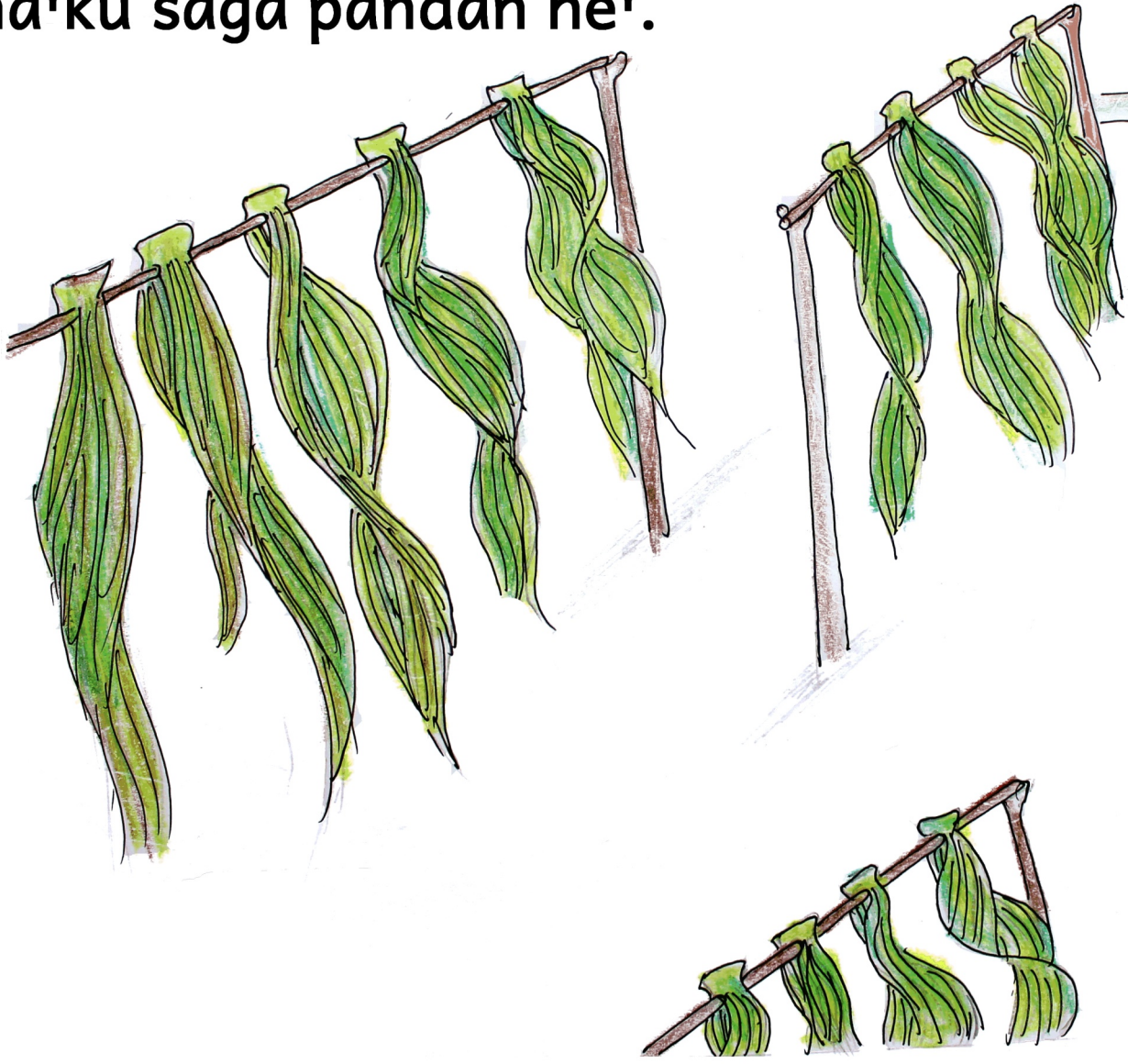


Apuwas pa'in jinangatan,

nihagoman pabalik  
e' ina'ku ni bohe'-t'bbag  
ma undam.



Palabay pa'in dambahangi,  
pina'llawan na pabalik  
e' ina'ku saga pandan hē'.

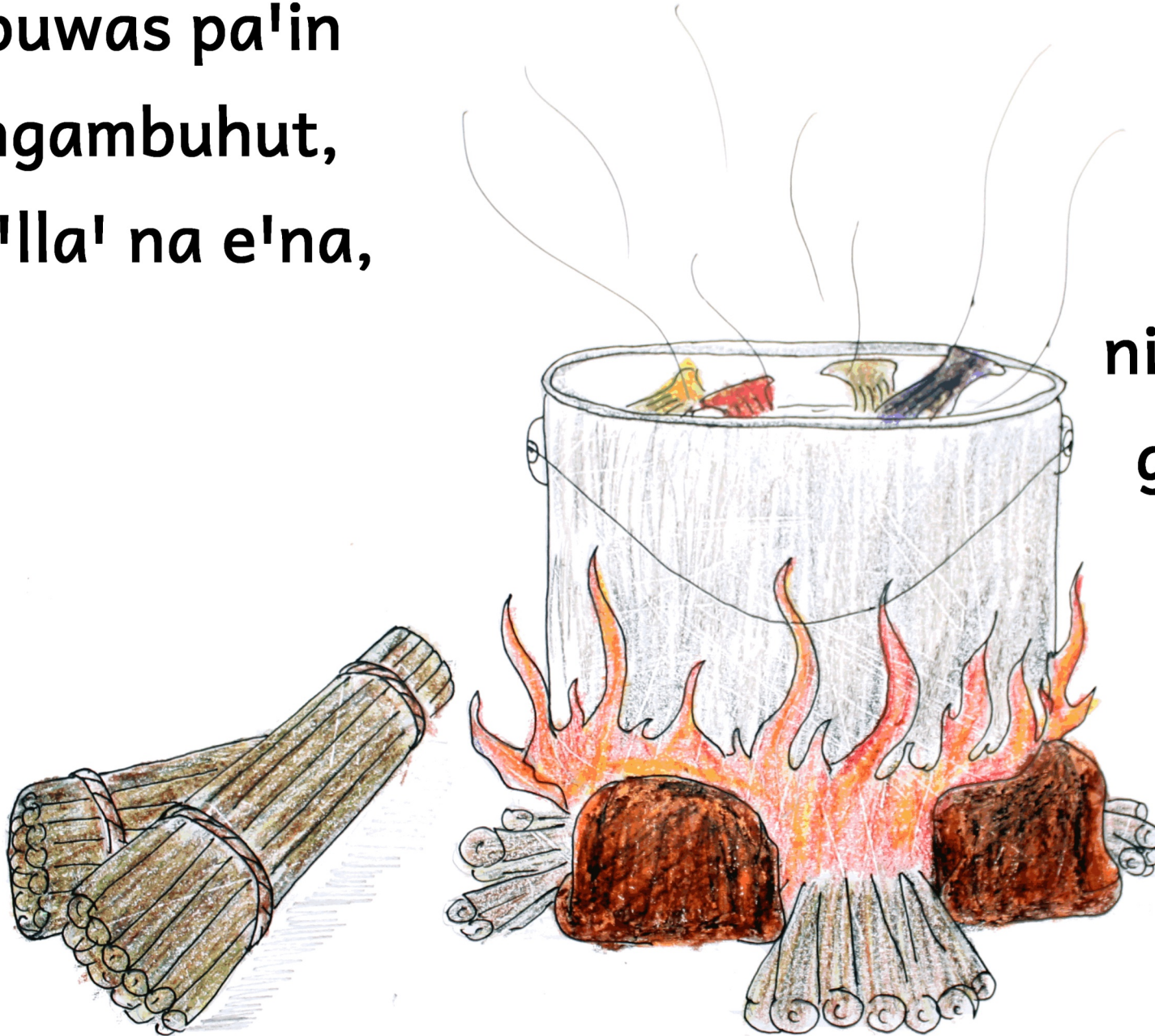




Atoho' pa'in,  
niambuhutan e' ina'ku  
maka kuhut bo' supaya  
apote' maka alunuk.



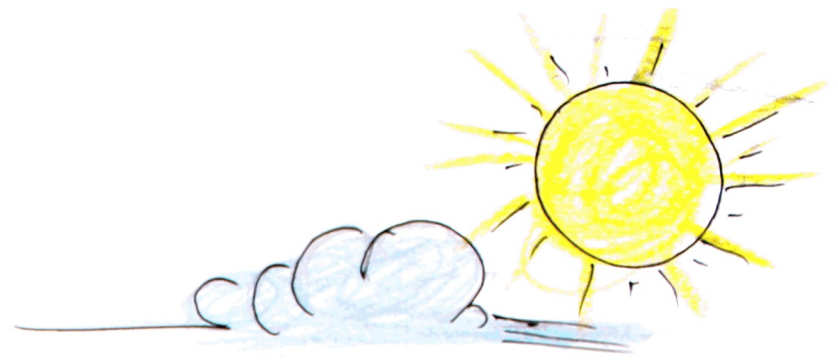
**Apuwas pa'in  
angambuhut,  
bin'lla' na e'na,**



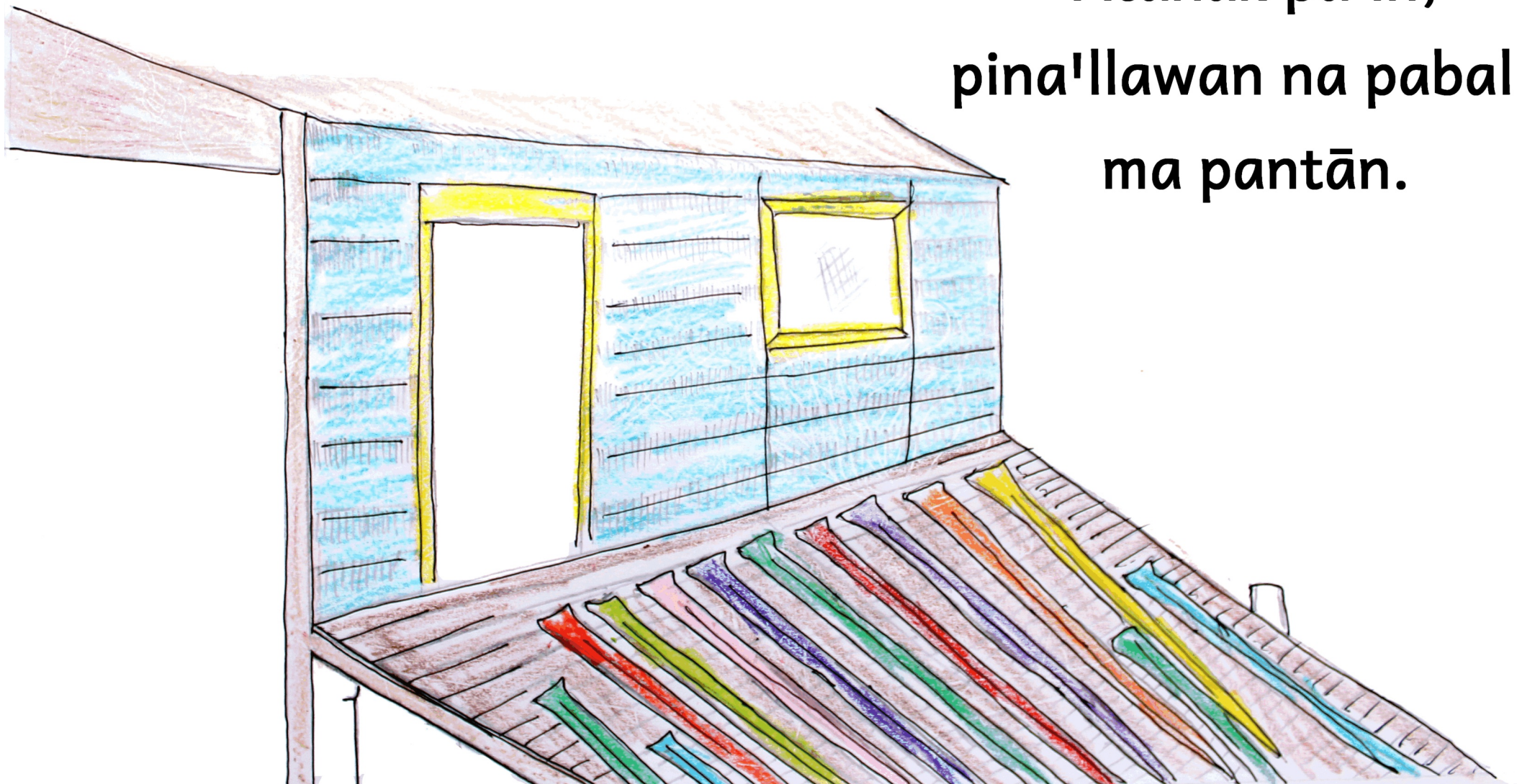
**nilamuran maka  
ginisan anjibi.**







**Atahak pa'in,  
pina'llawan na pabalik  
ma pantān.**





Nianom na tepo e' Ina'ku  
ya saga ginisan walna'  
pandan hē' llaw-sangom.

