



Ai To'ongan Abuhah?

Author: Sukanya Sinha

Illustrator: Hari Kumar Nair

Translator: Kauman Sama Online

Level 3



Bulbul manuk-manuk
ya pangōn itu
maka batu pangōn itu.

Na. Ingga maitu abuhah?
Ingga isab alampung?

"Uy na! Panilaw ai
buwattitu itu?"

Batu itu asal abuhah maka
bulbul manuk-manuk itu
asal alampung."



Na, itu gadja
maka itu isab
ya batu dinsini'.

Ingga bahā' abuhāt
maka ingga isab alampung?

Marai' makapamūng ka,

"Dupang ai na panilaw itu?"

Sabab abuhāt asal gadja itu
maka alampung isab
batu itu.



Tagad ka. Mbal bahā' yuknu dinsini' abuhāt batu inān?

"Aho', ya sababanna pasalan abuhāt iya min bulbul manuk-manuk!
Sogo' alampung TO'ONGAN iya min gadja."



Na, kalu ahāp lagi' da'a kitam ah'lling, "Itu abuhāt," atawa "Itu alampung."

Marai' ahāp lagi' bang kitam anilaw,

"Ingga **labi** abuhāt minnitū maka minna'an?"

atawa,

"Ingga **labi** alampung minnitū maka minna'an?"

Buwattingga kitam makata'u - **Bang pila buhat batu itu?**

Kasambungantam bahā' panilaw itu minsan mbal gunatam gadja atawa bulbul manuk-manuk?

Aho'. Makajari!

Manjari *kilogram** gunata panukuran bang pila buhat batu ī'.

Kilogram itu ya ginuna panimbang buhat.

* *Kilogram* itu bang ma Sinama, ya na kilu.
Makajari isab sinulat *kg*, hatina kilu.





Pila bahā' ya buhat dakilu itu?

Nda'ta.

Bā'anin ya magdagang sayul ma tabu',

"Buwanin ba aku dakilu (1 kg) siboyas."

Jari dakilu (1 kg) batu-timbang
pinat'nna e'na min dambila' timbangan
maka datumpuk isab siboyas min dambila'
sampay datimbang na karuwa.

Kagunahanta panyap datimbang maka dakilu.

Kata'uwanku na!

Datimbang dalitru bohe' maka dakilu.

Pabalikta sulita dinsini' pasal gadja.

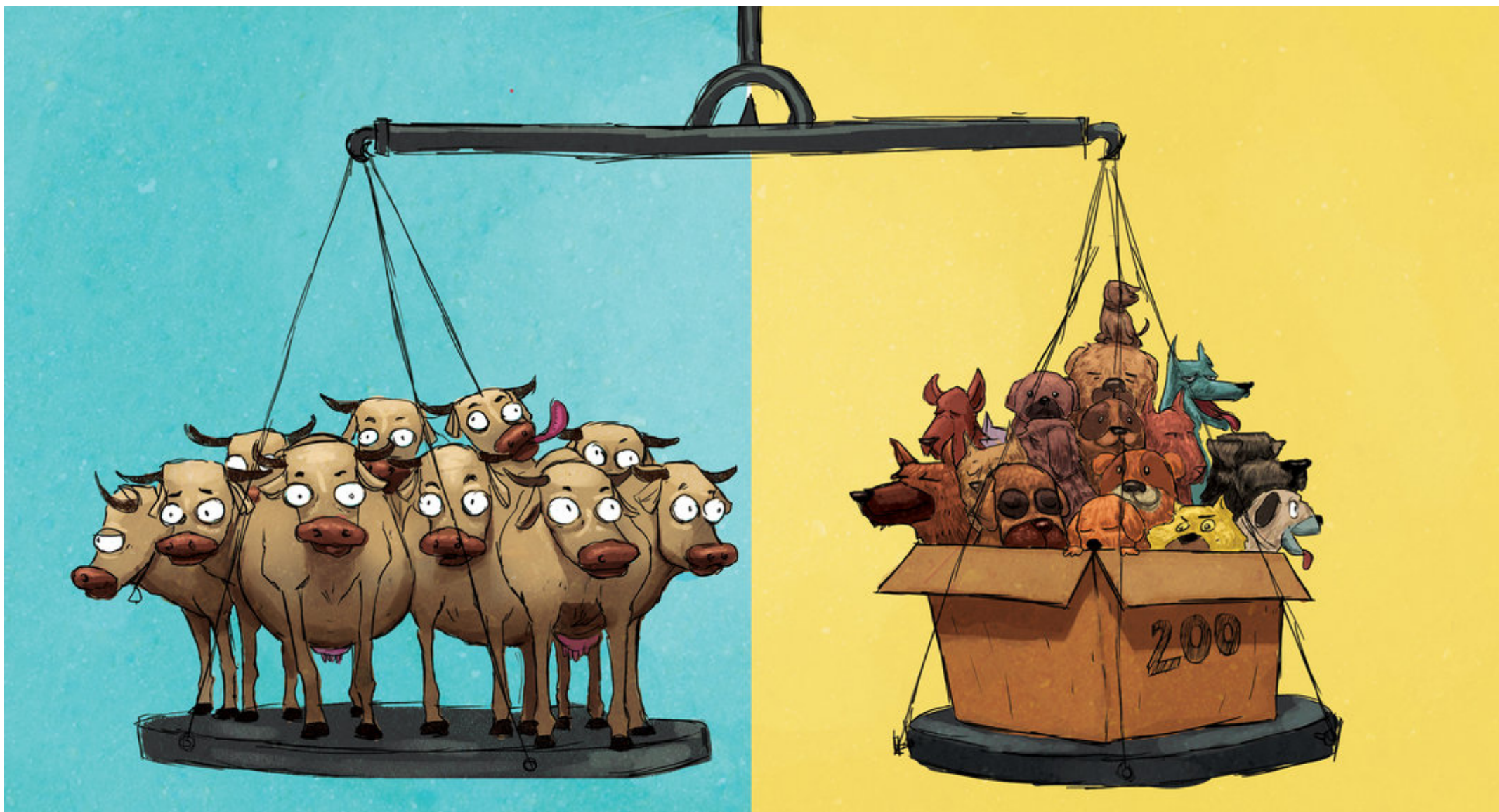
Pila bahā' buhat gadja bang kinilu? **4,000 kg!**

Hatina bang takayanu pinatingkō' gadja min dambila'

timbangan,

kagunahannu isab 4,000 litru bohe' ma dambila' bo' atimbang.



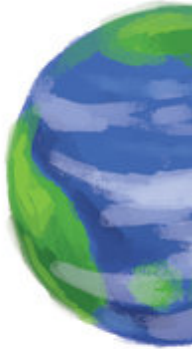


Dasali' isab buhat 4,000 kg itu maka 10 sapi atawa 200 ero'.

Na, pagga tasulitam saga ai-ai **landu' abuhāt**,
sulitam isab bang:

Pila bahā' buhat dunya?

Ya buhat dunya itu sampay kamemon mareyomna...





=



5,974,000,000,000,000,000,000

...5,974,000,000,000,000,000,000 kg atawa 5,974,000,000,000,000,000,000 litru bohe'!


Hatina, abuhat to'ongan makalandu'!

Minsan ubustam kamemon bohe' ma dunya, mbal makap'nno'an saga litru itu kamemon!



Hē! Abuhat na pagsuli itu. Pabalikta na ni bulbul manuk-manuk ī'.
Pila bahā' lampungna-ī'?

Kulang-labi 200,000 lampungna min dakilu.
Bang pat'nna'nu dalitru bohe' ma dambila' timbangan,
subay ka isab amat'nna' 200,000 bulbul manuk-manuk min dambila' bo' sigām dabuhat.



Dap'ttak ulan saga 30,000
alampung min dakilu (1 kg.)

Hatina, subay saga aniya' 30,000 p'ttak ulan
bo' dabuhat maka dalitru bohe'.

Dansolag asin saga 2,000,000
alampung min dakilu.

Uy na, bang buwattī',
MAMARAHĪ ko' lampungna ilu!



Alla! Marai'
sinunggu-sunngu na kam!

Aheka' bahā' panilawbi
buwattina'an:

Pila bahā' buhat
solagan ungu?

Pila bahā'
buhat manusiya'
kamemon ma dunya?

Sai bahā' bay makatagna'
angōn dakilu itu?

Subay Pinikilan

1. Tabākta ma page 8, jukup dakilu ya buhat dalitru bohe'.
Na, pila litru bahā' bohe' ya dabuhat maka KA'A?
2. Kata'uwanta isab ya buhat dakayu' gadja
min India saga 4,000 kilu.
Bang yukta dabuhat tren ap'nno' e' pasahero maka
250 gadja, na, saga pila kilu bahā' buhatna?
3. Na, ya ingga labi abuhat, dakilu basi' atawa dakilu gapas?





Panambung:

1. (Magbidda' panambungna pasal magbidda' isab buhat onde'-iskul.)
2. 1,000,000
($250 \times 4000 = 1,000,000$)
3. Dabuhat du pasal sali' buhat sigām dakilu!
Ya sadja pagbidda'anna, labi aheka' nīnda' dakilu gapas min dakilu basi'.

Ahāp (lesson) itu ma classroom atawa minsan ma luma',
sabab makatabang itu ma paganad saga kaonde'an pasal buhat maka pagkilu.

Ai na pa'in saga kagunahannu:

- Timbangan ya magdambila' ya taga batu-timbang.
- Dalitru bohe'.
- Ginisan panyap magginis buhatna ya tabāk ma iskul atawa ma luma'.
(Saupama: putusan ginisan sayul, buk, sasapu, putusan buwas, atawa ai-ai na.)

Ai nihinang:

1. Ni'nde'an bohe' ma kassa' inān ni saga onde'-iskul bo' pinakira buhatna.
Angkan buwattī', sukul kata'uan sigām bang buwatingga buhat dakilu itu.
2. Sinōngan isab saga ginisan panyap inān ni saga onde'-iskul bo' sigām tinilaw
bang ya ingga abuhāt atawa alampung min dakilu. Soho'un isab sigām anokod
bang pila buhat saga panyap ya nīntanan e' sigām inān bo' sinulat ni blackboard.
3. Timbangunbi saga ai-ai inān magdambila' maka dalitru bohe'
(bo' kasambungan panilaw 'alampung ba atawa abuhāt min dakilu?'.)
4. Ubus, tinimbang isab magdambila' maka batu-ī' bo' kata'uwanta
bang tauwa' atawa asā' tokod saga onde'-iskul.

Ai To'ongan Abuhat?

(Sinama (Central))

Abuhat batu min bulbul manuk-manuk sogo' alampung iya min gadja. Na ai bahā'? Abuhat atawa alampung batu? Makata'u bahā' kitam bang pila buhat (atawa lampung) dakayu' batu? Ta'uhunbi panambung ma saga panilaw itu maka kasehe'an panilaw min book itu ma pasalan BUHAT.

This is a Level 3 book for children who are ready to read on their own.

Derived from 'How Heavy is Heavy?' by Sukanya Sinha

© 2018 Pratham Books. CC-BY 4.0

Illustrations by Hari Kumar Nair

© 2018 Pratham Books. CC-BY 4.0

Translated by Kauman Sama Online

© 2018 Kauman Sama Online. CC-BY 4.0



Pratham Books goes digital to weave a whole new chapter in the realm of multilingual children's stories. Knitting together children, authors, illustrators and publishers. Folding in teachers, and translators. To create a rich fabric of openly licensed multilingual stories for the children of India and the world. Our unique online platform, StoryWeaver, is a playground where children, parents, teachers and librarians can get creative. Come, start weaving today, and help us get a book in every child's hand!